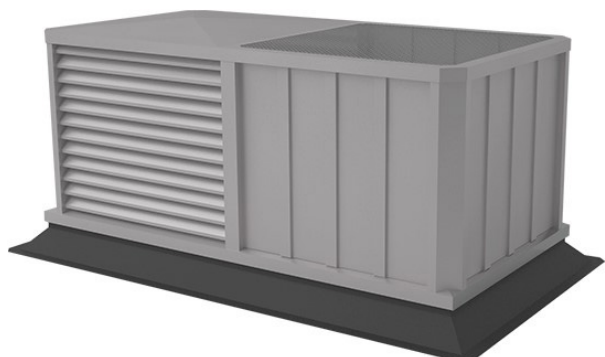


NASA-HV Roof cowl

Horizontal / vertical



Features

- Suitable for large air volumes
- Available in very large dimensions
- For combined inlets and outlets
- 10-year warranty

Product description

The renewed series of NASA roof cowls is ideal for the supply and extraction of large amounts of air and ventilation. The new construction offers even more durability. Econox offers a 10-year warranty. The NASA-HV is a model that combines the horizontal NASA-H and the vertical NASA-V. Also in this combined roof cowl, the horizontal part is equipped with louvers and the vertical part with a rainwater drain. The roof cowl is available up to very large dimensions so that the air extraction of several ventilation systems can be combined.

Housing	Aluminium
Standard colour	RAL 7035
Air supply	Yes
Air extraction	Yes
Air flow rate	
Max. supply advice	3 m/s
Max. discharge advice	4 - 5 m/s
Air direction	Horizontal and vertical

Specificaties

Materiaal: aluminium

Standaard kleur RAL: RAL 7035 (tegen meerprijs zijn ook andere kleuren leverbaar)

Leverbare accessoires:

DOS: aluminium dakopstand, ongeïsoleerd

DOS-G: aluminium dakopstand, geïsoleerd

Note

The maximum recommended air velocity for the horizontal outlet is 5 m/s and for the horizontal inlet 3 m/s. The recommended air velocity for vertical outlet is 4 - 5 m/s. Other sizes on request.

More information

For more information, please visit

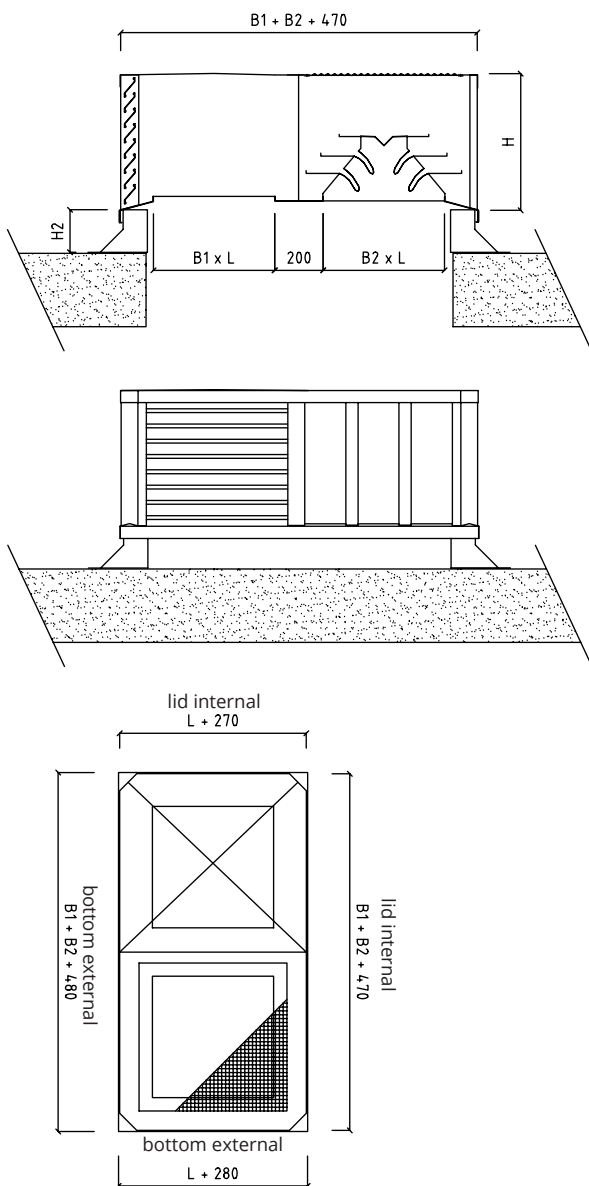
www.econox.nl/downloads.

The following information is available online for this product.

- Product sheet
- Documentation
- Specification text

NASA-HV Roof cowl

Horizontal / vertical



Distributor:

Econox bv, Nederland
www.econox.nl

Producer:

Econox bv, Nederland
www.econox.nl