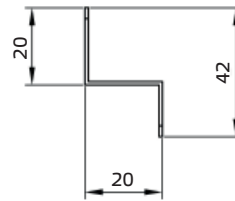
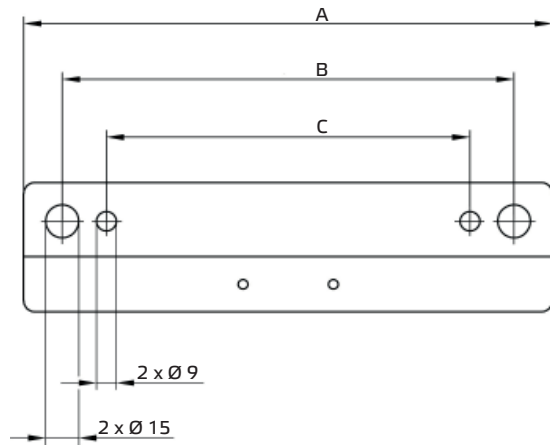


## Mounting Bracket MRS



Type	ID	Verwendung für:	A mm	B mm	C mm	Weight kg
MRS 1	110094	RS 100 - RS 150, RS 160	245	205	165	0,3
MRS 2	110095	RS 150L, RS 160L - RS 315L	340	300	260	0,4

- Mounting Bracket for RS tube fans
- Sheet steel, galvanized

**Scope of supply:**

- 1 Bracket
- 2 Phillips screws, 6 x 45 mm
- 2 Dowel, 8 x 40 mm